

COBRA AK / Evo X

Flachdach-Aufbau
Superstructure en toit plat
Struttura su tetto piano
Flat roof construction



Montageanleitung
Instructions de montage
Istruzioni di montaggio
Installation instructions

! WARNING

Absturzgefahr
Ungesichertes Arbeiten auf Dachflächen ist lebensgefährlich.
Sichern sie sich und ihr gesamtes Arbeitsumfeld normengerecht!

Montagearbeiten dürfen nur durch ausgebildetes Fachpersonal ausgeführt werden.

Für Montagearbeiten auf der gesamten Baustelle sind die Sicherheitsbestimmungen der SUVA zwingend einzuhalten.

Detaillierte Informationen dazu erhalten Sie unter www.suva.ch oder unter Telefon 0848 83 08 30. Suva, Fluhmattstrasse 1, 6002 Luzern

Ist eine Montagehilfe der Firma SOLTOP Energie AG vor Ort, sind den Anweisungen dieser Person zu folgen.

Das gesamte Kollektorfeld muss wenn vorhanden, an die Blitzschutzanlage des Hauses angeschlossen werden.

Die Kollektoren dürfen nicht bei intensivem Sonnenschein befüllt werden.

max. Betriebsdruck: 6.0 bar (g)
zulässige Schneelast: 100 kg/m²
zulässige Windlast: 130 kg/m²
Stagnations-Temperatur: 195° C

! AVERTISSEMENT

Risque de chute
Les travaux non sécurisés sur toitures plates présentent un danger de mort.
Protégez-vous, ainsi que tout votre environnement de travail conformément aux normes!

Les travaux de montage doivent être exécutés uniquement par un personnel spécialisé formé.

Pour les travaux de montage sur tout le chantier, les consignes de sécurité de la SUVA doivent être impérativement respectées.

Vous trouverez de plus amples informations à ce sujet en consultant le site www.suva.ch ou en appelant au numéro de téléphone 0848 83 08 30. Suva Fluhmattstrasse 1, 6002 Lucerne

Si un assistant de montage de la société SOLTOP Energie AG se trouve sur place, il faut impérativement suivre les instructions de cette personne.

Si la maison est équipée d'un système de parafoudre, tous les capteurs doivent y être connectés.

Ne pas remplir les capteurs quand le soleil brille intensément.

Pression de service max.: 6.0 bars (g)
Charge de neige admissible: 100 kg/m²
Charge de vent admissible: 130 kg/m²
Température de stagnation: 195° C

! ATTENTIONE

Pericolo di caduta
Chi lavora sui tetti senza applicare i dispositivi di sicurezza corre un pericolo mortale.
Applicate i dispositivi di sicurezza secondo le norme per voi e per il vostro ambiente lavorativo!

Il lavori di montaggio possono essere eseguiti unicamente da personale specializzato e qualificato!

Per le operazioni di montaggio in tutto il cantiere si devono assolutamente rispettare le disposizioni di sicurezza SUVA.

Informazioni dettagliate in proposito al sito www.suva.ch o telefonando al numero 0848 83 08 30. Suva, Fluhmattstrasse 1, 6002 Lucerna

Se sul posto è presente un assistente al montaggio della SOLTOP Energie AG, si devono assolutamente rispettare le istruzioni di questa persona.

Tutto il campo di collettori deve essere collegato all'impianto parafulmini della casa, se presente.

I collettori non devono essere riempiti in caso di forte irraggiamento solare.

Pressione di esercizio max.: 6.0 bar (g)
Carico di neve consentito: 100 kg/m²
Carico dovuto al vento consentito: 130 kg/m²
Ristagno di temperatura: 195° C

! WARNING

Danger! Risk of Falling
Unsecured work on roof surfaces is extremely dangerous.
Protect yourself and make sure that your entire working space is safe.
Follow guidelines.

Assembly work may only be carried out by trained specialised staff.

Compliance with SUVA safety regulations is mandatory for all installation work anywhere on the building site.

You can obtain detailed information at www.suva.ch or by calling 0848 83 08 30. Suva Fluhmattstrasse 1, 6002 Lucerne

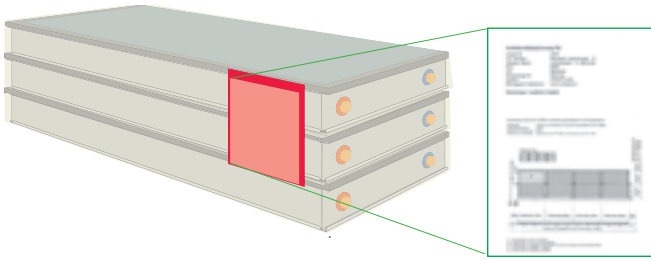
If an installation technician from SOLTOP Energie AG is on location, his instructions must be complied with.

If the building has a lightning protection system, the entire collector field must be connected to it.

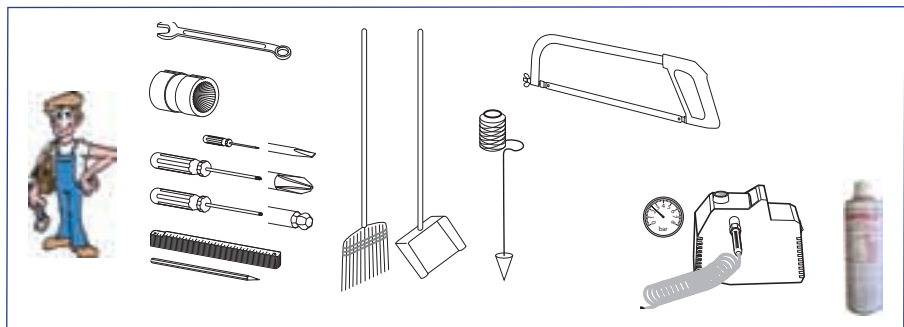
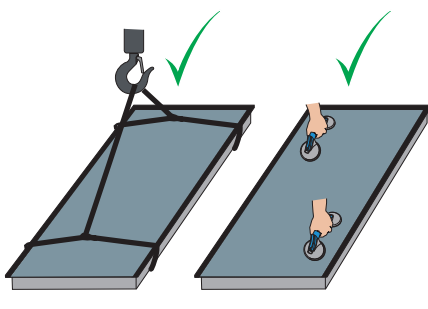
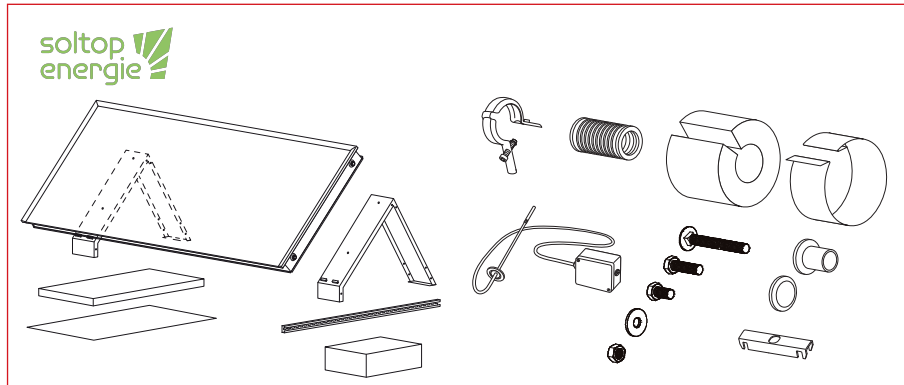
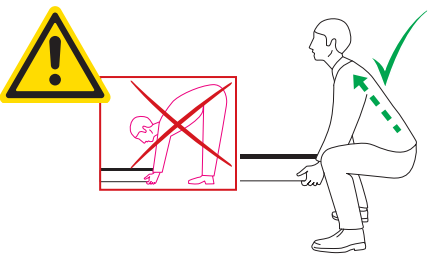
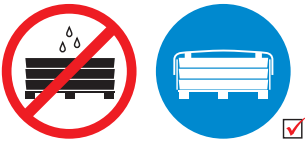
The collectors cannot be filled during intense sunlight.

Max. operating pressure: 6.0 bar (g)

Maximum snow load: 100 kg/m²
Maximum wind load: 130 kg/m²
Stagnation temperature: 195° C



	Typ	L mm	B mm	kg	
	COBRA AK	2.3H	2347	970	41
B	COBRA AK	2.8H	2347	1190	48
L	COBRA Evo X	2.8H	2347	1190	51



deutsch

Hinweis

Beim Wegräumen des Kieses ist grösste Vorsicht geboten! Die Dachhaut darf nicht verletzt werden. Allfällige Beschädigungen sind durch erfahrene Fachleute in stand zu stellen.

Wartung/ Pflege

SOLTOP Hochleistungskollektoren sind selbstreinigend, befreien Sie diese nicht von Schnee und anderen Umwelteinflüssen. Bei Störungen am SOLTOP Solarsystem wenden sie sich bitte an den SOLTOP Service.

Füllmedium

0–1000 m ü. M 38% Antifrogen L H₂O
1001–2500 m ü. M 50% Antifrogen L H₂O
Giftklassenfrei. 38% ± -20°C, 50% ± -40°C

Entsorgung

Alle Baustoffe welche in den SOLTOP Hochleistungskollektoren verbaut sind, sind fachgerecht zu entsorgen, dem Umweltschutz ist Rechnung zu tragen.



français

Remarque

Lors du déblayage du gravier, il faut être très prudent! La couverture du toit ne doit pas être altérée. Les éventuelles détériorations doivent être éliminées par des spécialistes expérimentés.

Entretien / soins

Les capteurs à haute performance SOLTOP sont autonettoyants. Il n'est pas nécessaire d'éliminer une éventuelle charge de neige ou de les protéger d'autres influences environnementales. En cas de dysfonctionnement du système solaire SOLTOP, veuillez vous adresser au Service SOLTOP.

Fluide

0–1000 m ü. M 38% Antifrogen L H₂O
1001–2500 m ü. M 50% Antifrogen L H₂O
Non-toxiques. 38% ± -20°C, 50% ± -40°C

Elimination

Tous les matériaux de constructions utilisés dans les capteurs à haute performance SOLTOP doivent être éliminés dans les règles de l'art afin de tenir compte de l'environnement.



italiano

Avvertenza

Si raccomanda la massima attenzione durante la rimozione della ghiaia! Il rivestimento del tetto non deve essere danneggiato. La riparazione di eventuali danni deve essere eseguita da personale specializzato.

Manutenzione / cura

I collettori SOLTOP ad alto rendimento sono autopulenti e non vanno liberati da neve ed altri agenti atmosferici. In caso di anomalie al sistema solare SOLTOP, rivolgersi al servizio assistenza SOLTOP.

Fluido

0–1000 m ü. M 38% Antifrogen L H₂O
1001–2500 m ü. M 50% Antifrogen L H₂O
Non tossico. 38% ± -20°C, 50% ± -40°C

Smaltimento

Tutti i materiali utilizzati nei collettori SOLTOP ad alto rendimento devono essere smaltiti a regola d'arte tenendo conto della tutela dell'ambiente.



english

Please note

Please take great care when removing gravel! It is important not to damage the roof cladding. Any damage must be repaired by experienced professionals.

Maintenance / care

SOLTOP high performance collectors are self-cleaning; do not remove snow or other such substances from them. Please contact SOLTOP Service if you experience any difficulties with your SOLTOP Solarsystem.

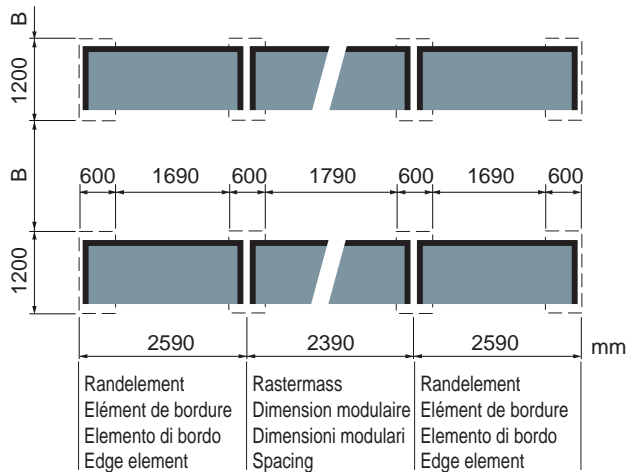
Fluid

0–1000 m ü. M 38% Antifrogen L H₂O
1001–2500 m ü. M 50% Antifrogen L H₂O
Non-toxic. 38% ± -20°C, 50% ± -40°C

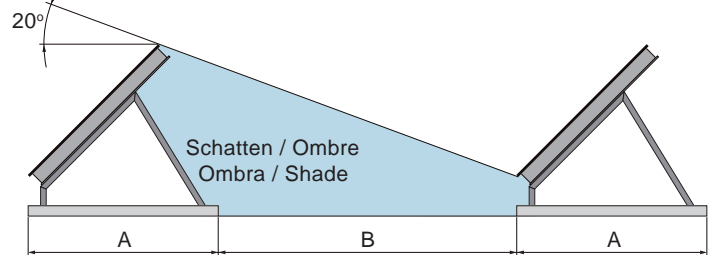
Disposal

All materials present within SOLTOP high performance collectors are to be disposed of properly in accordance with environmental protection considerations.

Abmessungen / Dimensions / Dimensioni / Dimensions



Tiefster Sonnenstand / Position du soleil la plus basse
 Posizione solare più bassa / Low sun elevation



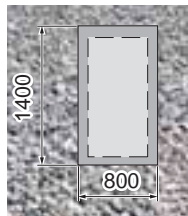
Minimale Reihenabstände um Beschattung zu vermeiden
Espace minimal entre les rangées pour éviter l'ombrage
Distanza minima tra le file per evitare l'ombreggiamento
Minimal row spacing to avoid shade

Typ	20°		30°		45°		60°	
	A	B	A	B	A	B	A	B
2,3 m ²	1200	550	1200	880	1200	1260	1200	1460
2,8 m ²	1200	970	1200	1380	1200	1840	1200	2100

Platzbedarf bei Flachdach mit Kiesbett, kiesfrei pro Betonplatte.
Encombrement en cas de toit plat avec lit de gravier, sans gravier par semelle en béton.

Superficie necessaria per tetti piani con rivestimento in ghiaia, senza ghiaia per ogni lastra di cemento.

Space requirements or flat roof with gravel bed, gravel-free with concrete slabs



Hydraulische Feldanordnung / Disposition hydraulique des champs / Disposizione idraulica dei campi / Hydraulic field arrangement

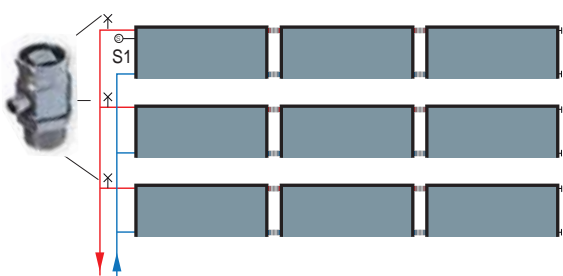
bis 8 m² Absorberfläche / jusqu'à 8 m² de surface de capteur
 fino a 8 m² di collettori / up to 8 m² collector surface



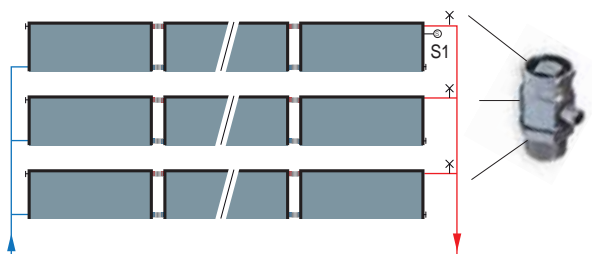
ab 8 m² Absorberfläche / à partir 8 m² de surface de capteur
 da 8 m² di collettori / from 8 m² collector surface



bis 8 m² Absorberfläche pro Reihe / jusqu'à 8 m² de surface de capteur par rangée
 fino a 8 m² di collettori per fila / up to 8 m² collector surface per row

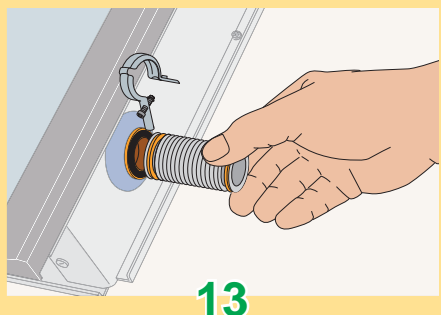
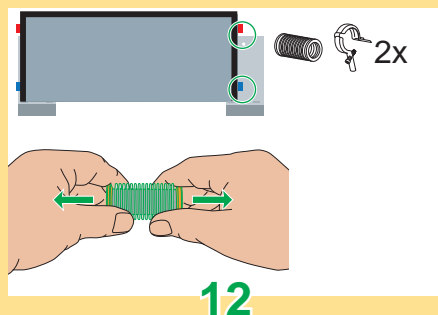
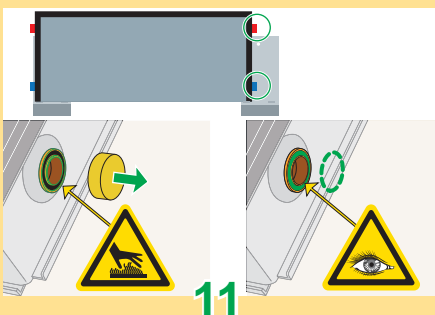
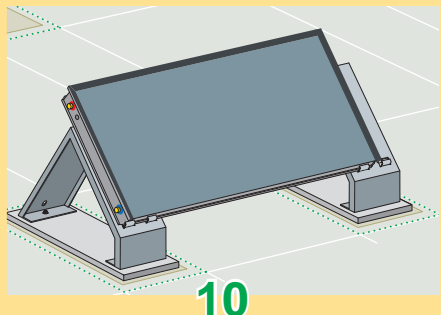
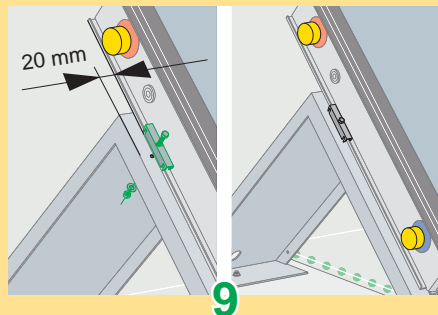
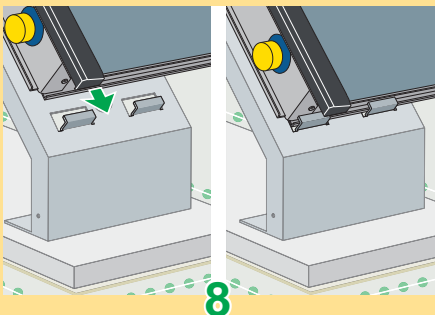
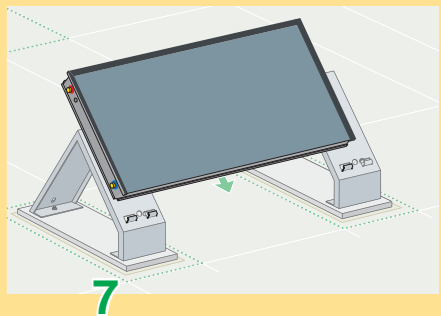
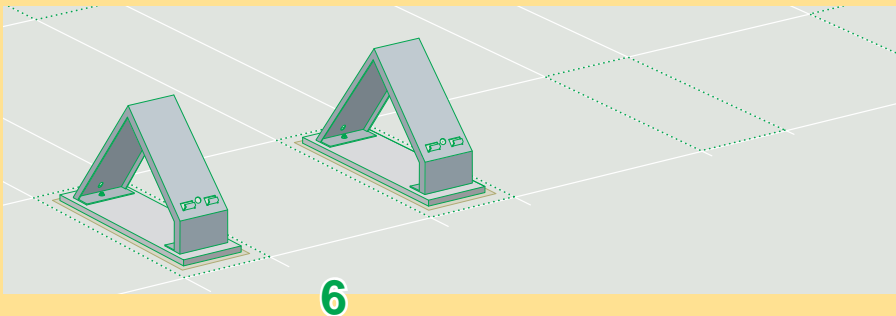
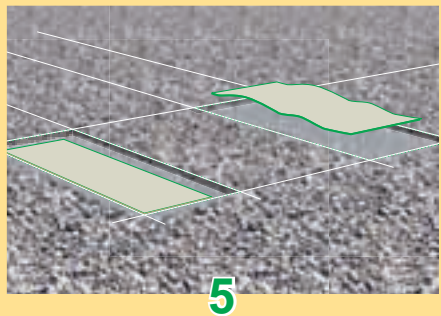
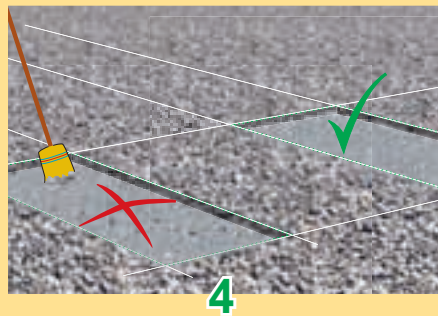
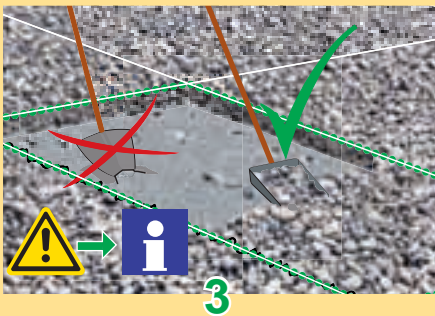
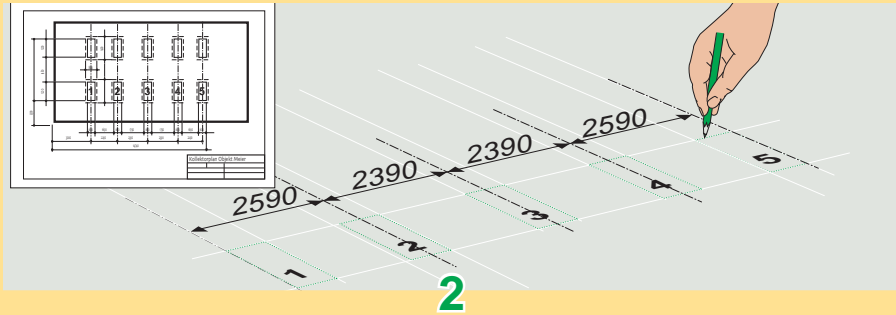
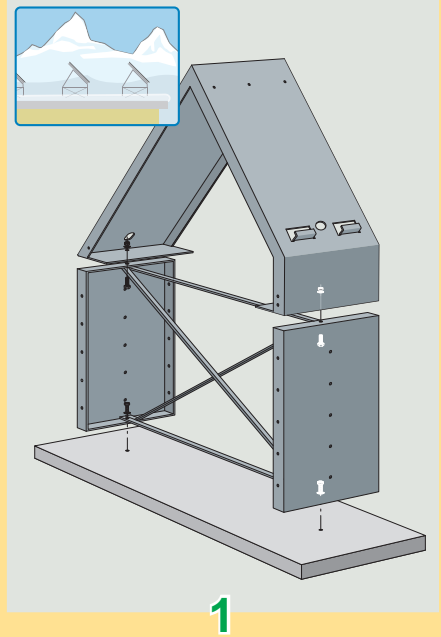
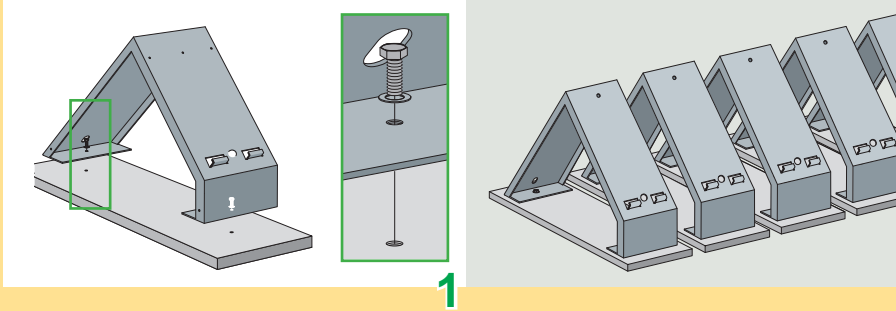


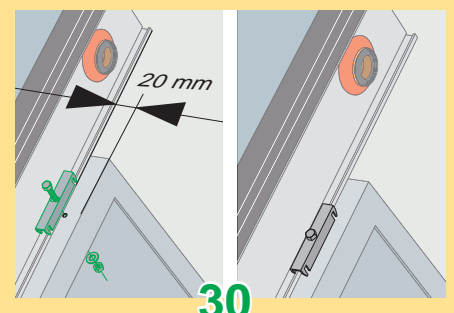
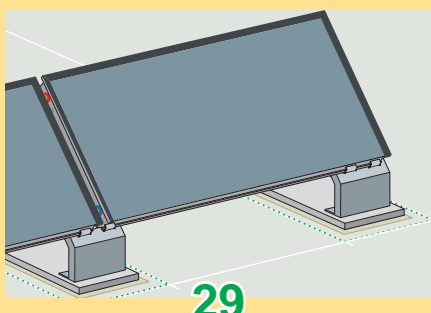
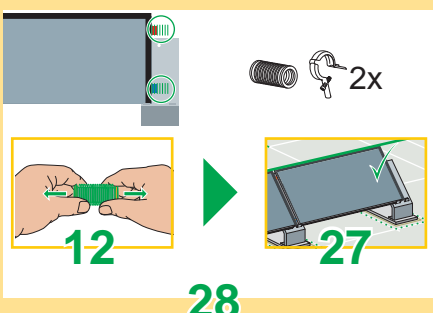
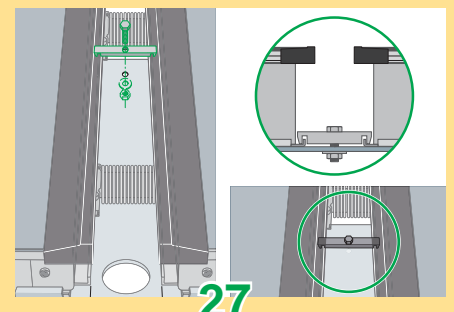
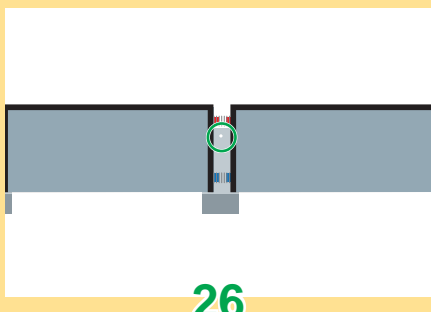
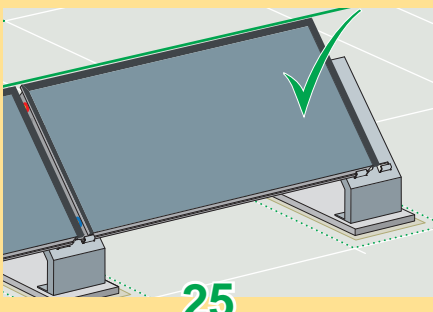
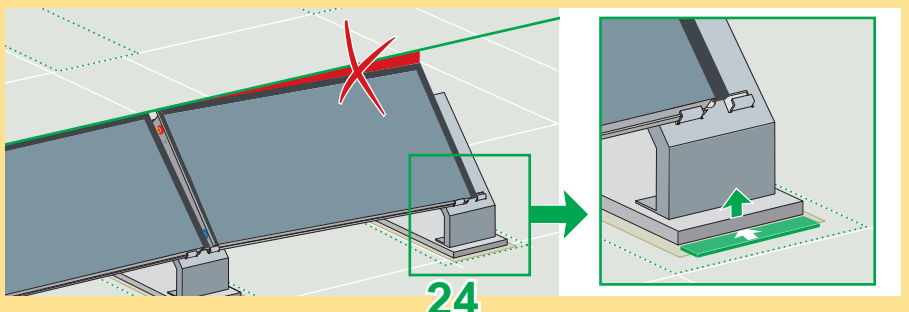
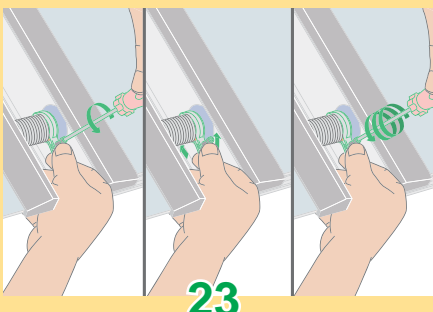
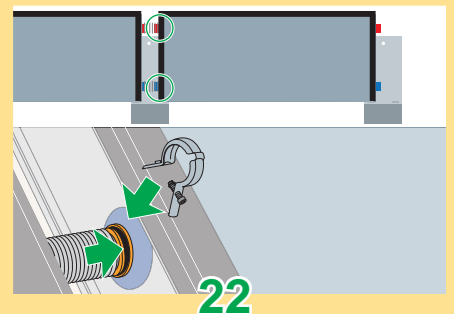
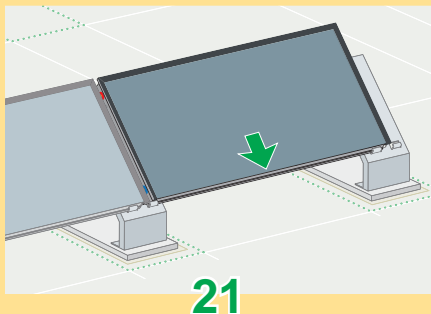
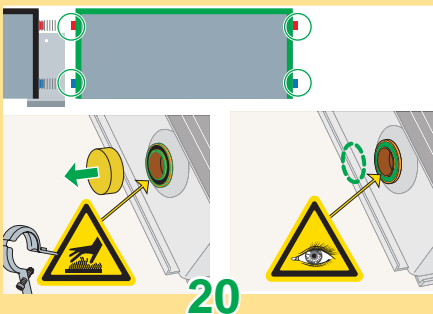
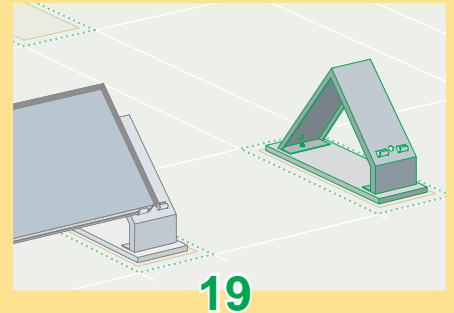
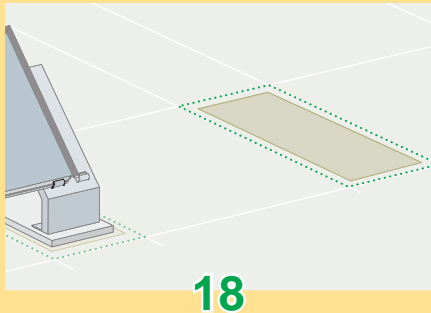
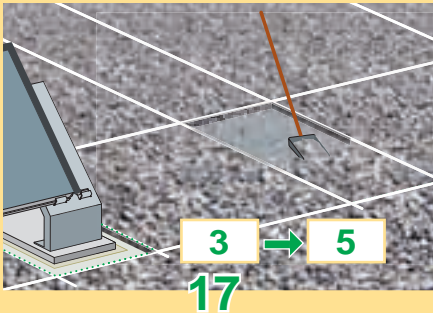
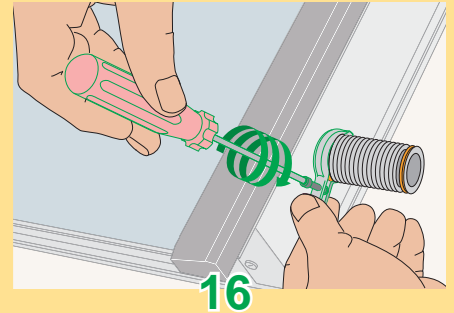
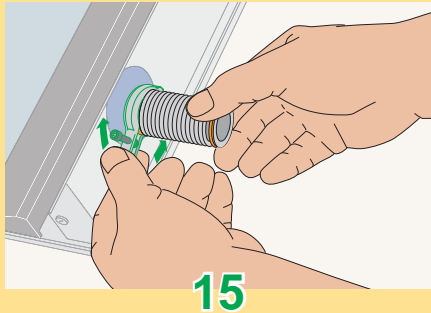
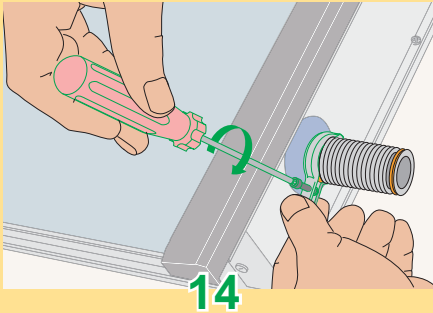
ab 8 m² Absorberfläche pro Reihe / à partir 8 m² de surface de capteur par rangée
 da 8 m² di collettori per fila / from 8 m² collector surface per row

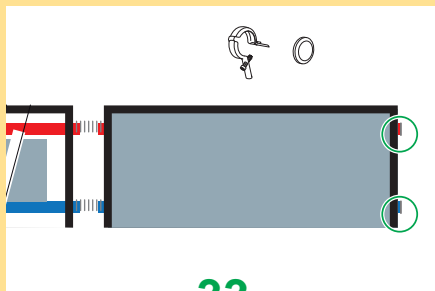


Dachdurchführungen (bauseits) / Traversées de toit (maître d'ouvrage) / Condotto tetto (in cantiere) / Roof ducts (on-site)

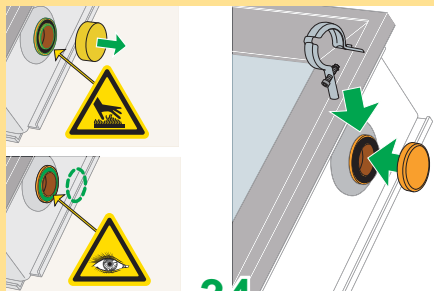




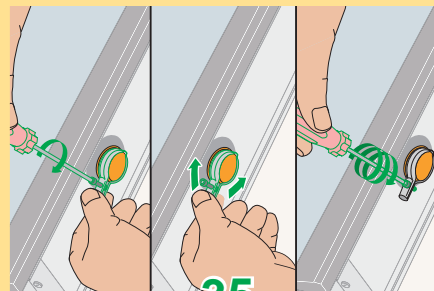




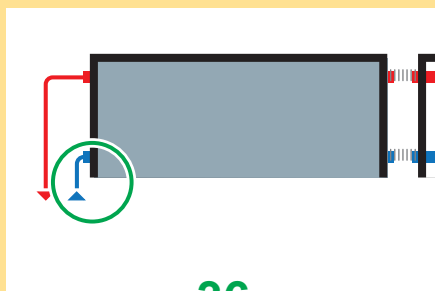
33



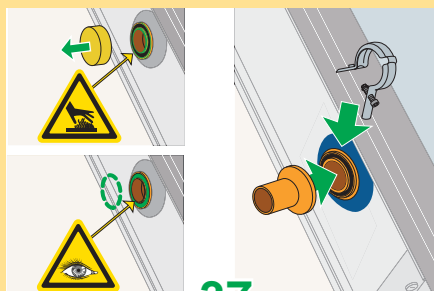
34



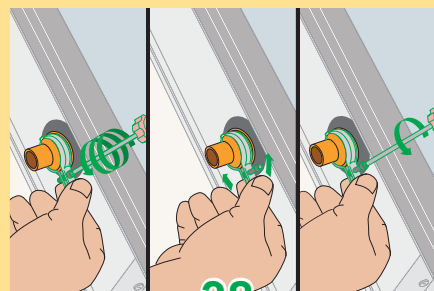
35



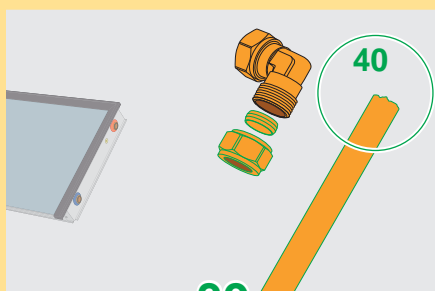
36



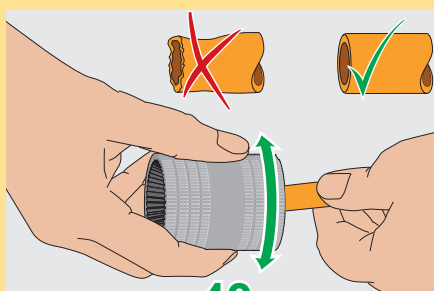
37



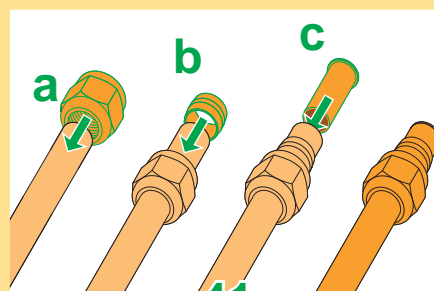
38



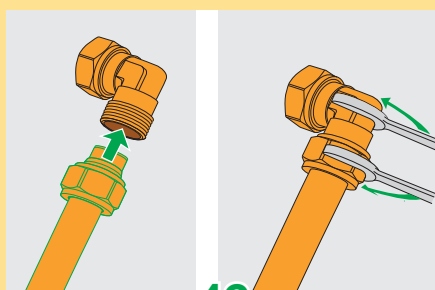
39



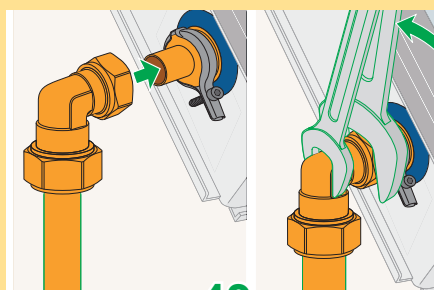
40



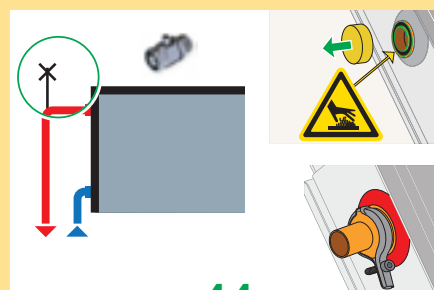
41



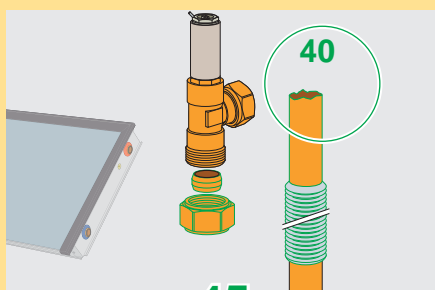
42



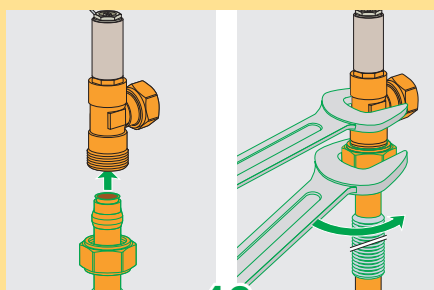
43



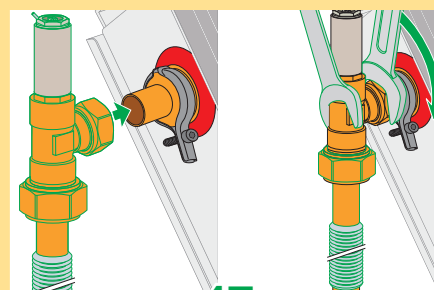
44



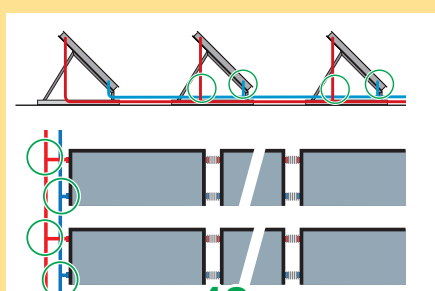
45



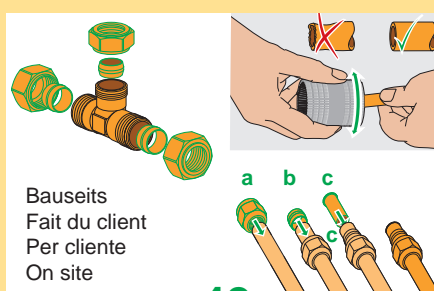
46



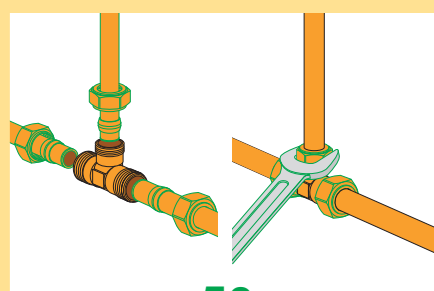
47



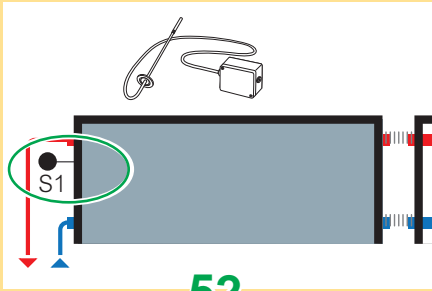
48



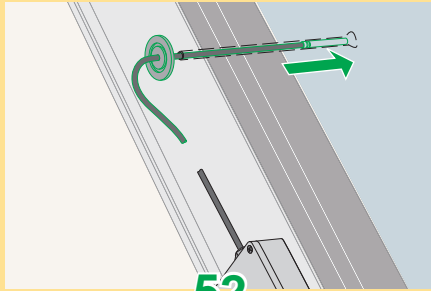
49



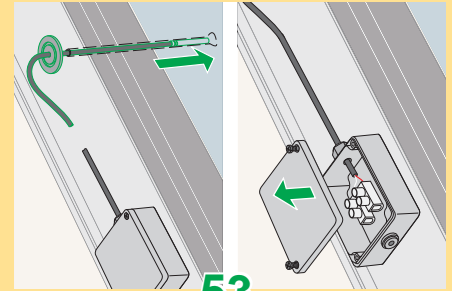
50



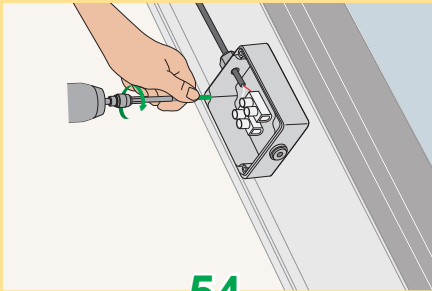
52



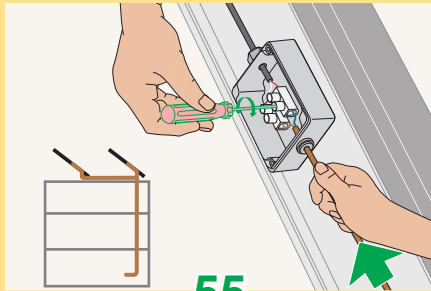
52



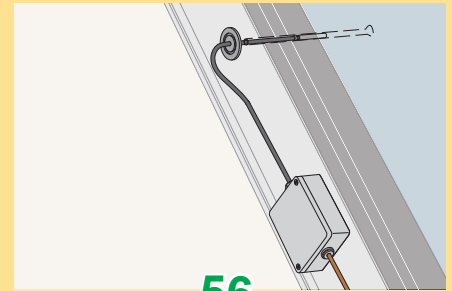
53



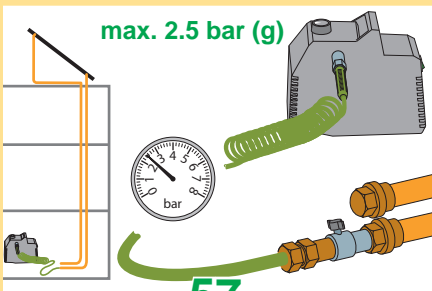
54



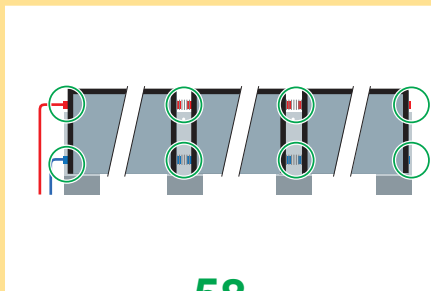
55



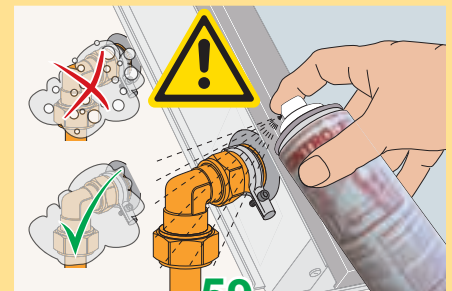
56



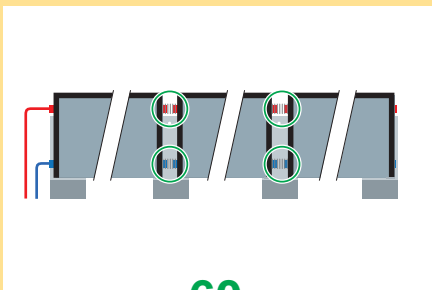
57



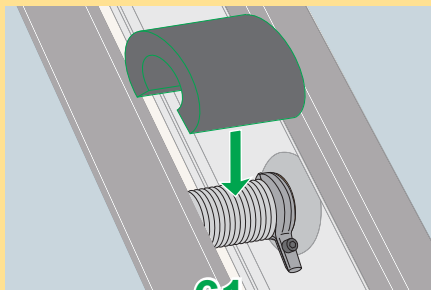
58



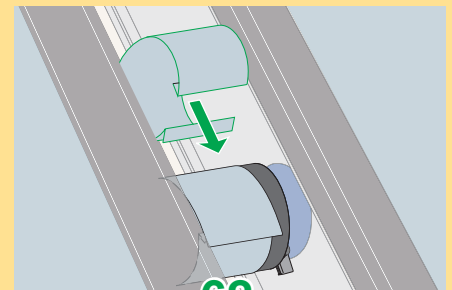
59



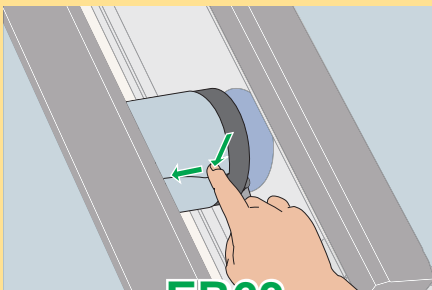
60



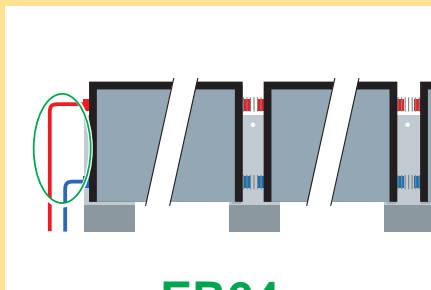
61



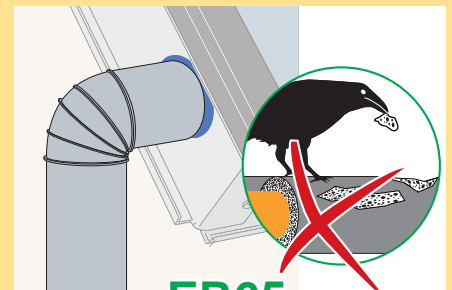
62



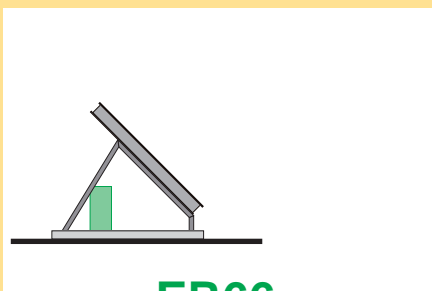
ER63



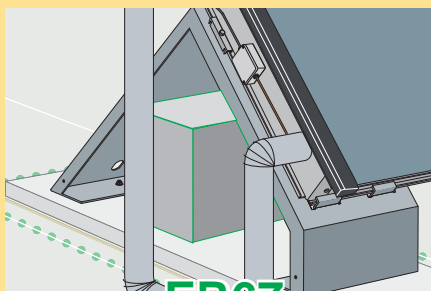
ER64



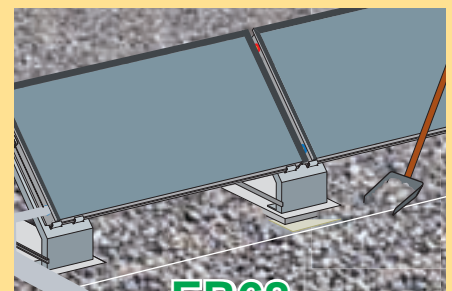
ER65



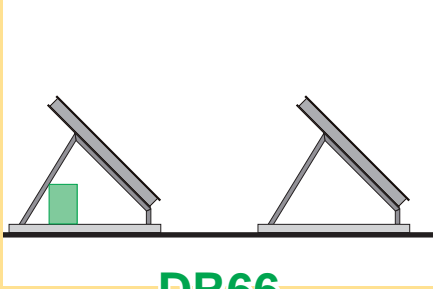
ER66



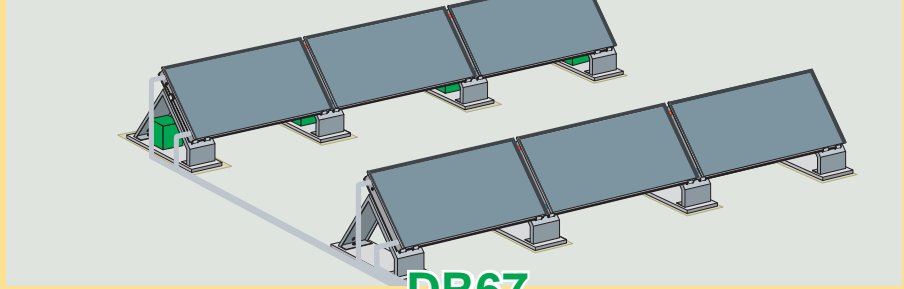
ER67



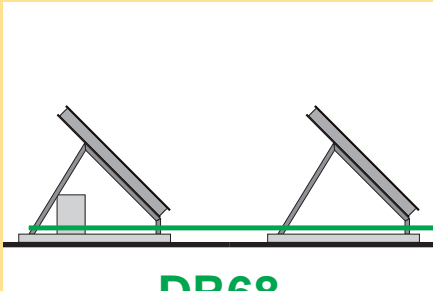
ER68



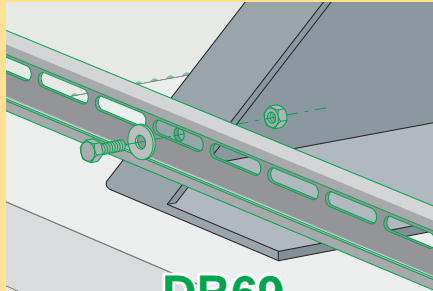
DR66



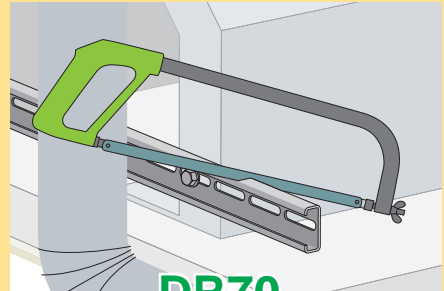
DR67



DR68



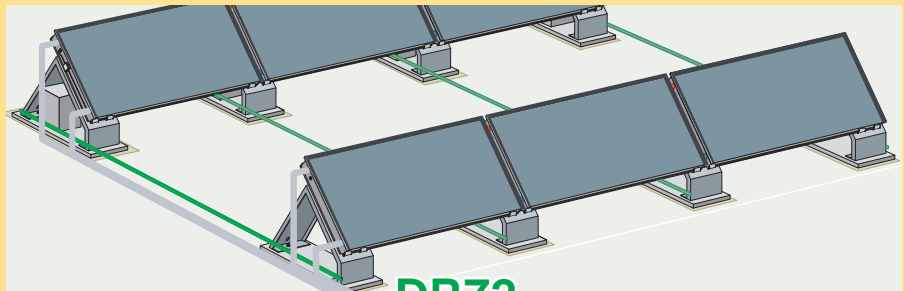
DR69



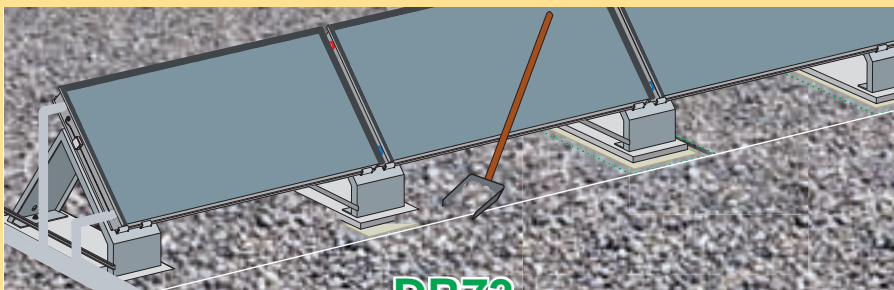
DR70



DR71



DR72

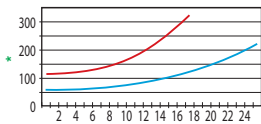


DR73

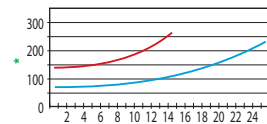


Druckverlusttabelle / Graphique perte de pression / Perdita di pressione grafico / Pressure loss chart

COBRA AK 2.3H



COBRA AK / Evo X 2.8H



— 30l/m²h — 15l/m²h

- d *mbar gesamt
- **Kollektoren pro Reihe
- f *total mbar
- **Collectionneurs par ligne
- i *totale mbar
- **Collezionisti per fila
- e *mbar total
- **Collectors per row